

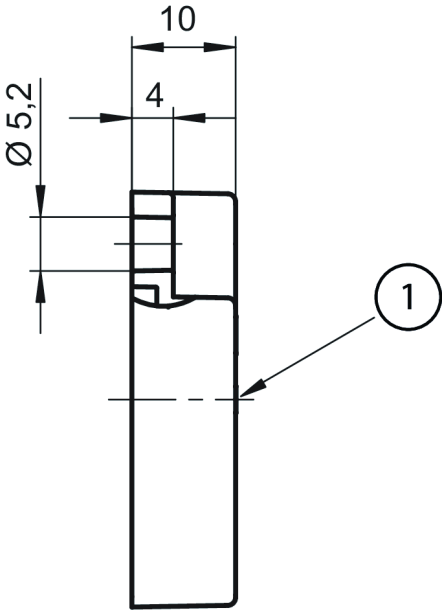
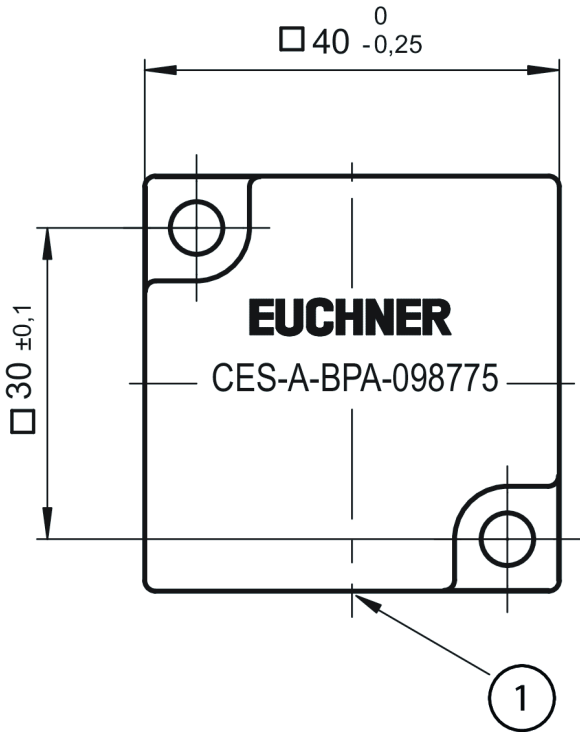
CES-A-BPA-098775 (Order no. 098775)

Actuator CES-A-BPA

▶ Cube-shaped design 40 x 40 mm



Dimensional drawings



1 Active face

Technical data

Approvals



Workspace

Actuator distance s

Minimum distance for side approach direction	min. 6 mm
--	-----------

Switch-on distance

with center offset $m=0$	22 mm
(These values apply to surface installation of the actuator on metal.)	

Secured switch-off distance s_{ar}

with center offset $m=0$	max. 58 mm
(These values apply to surface installation of the actuator on metal.)	

Secured switching distance s_{ao}

with center offset $m=0$	min. 18 mm
(These values apply to surface installation of the actuator on metal.)	

Switching hysteresis

with center offset $m=0$	1 ... 2 mm
(These values apply to surface installation of the actuator on metal.)	

Electrical connection values

Power supply	Inductive via read head
--------------	-------------------------

Mechanical values and environment

Tightening torque

Fixing screws	max. 1 Nm
---------------	-----------

Degree of protection	IP65/IP67/IP69/IP69K
----------------------	----------------------

Ambient temperature	-25 ... +70 °C
---------------------	----------------

Material

Housing	Plastic (PBT)
---------	---------------

Components included in the set

Included accessories

2x safety screws M5x10

Downloads

All documentation for this material can be found on our website:

<https://www.euchner.de/en-us/a/098775/?#downloads-tab>

Ordering data

Ordernumber	098775
Item designation	CES-A-BPA-098775
Gross weight	0,029kg
European Article Number (EAN)	4047048005440
Customs tariff number	85389099990
ECLASS	27-27-24-04 Actuator for safety-related proximity switch

Accessories

Mounting accessories

Safety screws M5 x 10

073455

M5X10-NIRO/V100

- ▶ Safety screws M5 x 10
- ▶ Packaging unit 100 pieces